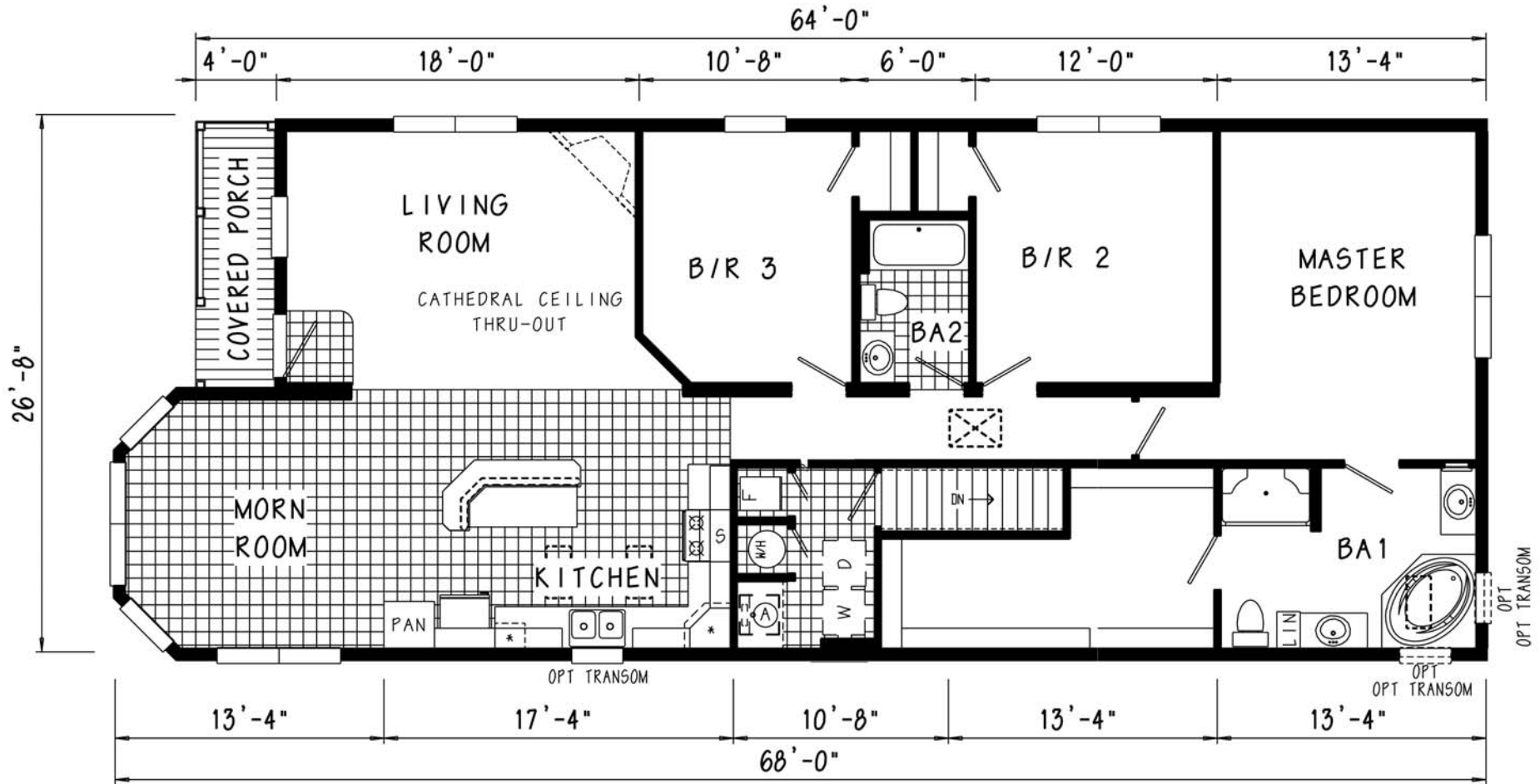


LINDEN (PG192-A Modular Home)



* = STAGGERED OVERHEAD CABINETS W/OPT 9' CEILING

PG192-A 2864 / 68 Approx. 1,631 Sq. Ft.

OPT TRANSOM WINDOW(S) AVAILABLE
WITH OPT 9' CEILING ONLY

Ⓐ = STD FRZ SPC, OPT
UTL SINK, OR BENCH

NOTE: BECAUSE OF VARYING STATE REQUIREMENTS
AND OPTIONAL EQUIPMENT, SOME OR ALL OF THE
UTILITY LOCATIONS MIGHT CHANGE PER FLOOR PLAN.
(I.E. FURNACE, STAIRWELL ETC.) CONSULT YOUR
FACTORY REPRESENTATIVE FOR EXACT SPECIFICATIONS.



LINDEN - PINECREST MODULAR



26'-8" x 68'

Approx. Sq. Ft.: 1,631



Kitchen W/ 42" Overhead Cabinets, Mocha Maple



Kitchen Looking Into Morning Room

**3517 Lincoln Hwy. East
Kinzers, PA 17535**



**Phone: (717) 442 - 8868
Web: www.patriothomes.biz**

Pinecrest Modular Ranch

INTERIOR

Primed Smooth Drywall Throughout
Cathedral Ceiling Throughout
Stipple Ceiling
7'6" Sidewall Height
5-Arm Brushed Nickel Dining Room Light
Scavo Nook Light
Glass Light Shades Throughout
Pre-Hung Door Jambs
Pinned Mortise Hinges
Metal Interior Passage Sets
Floor Mount Door Stops
Smoke Detectors With Battery Back-Up
Wire Shelving in Guest Closet

EXTERIOR

Patina Coach Light with Beveled Glass at Front Door
Brushed Nickel Square Lantern Light at Rear Door
Two GFI-Protected Exterior Receptacles
Vinyl Dutch Lap Siding
O.S.B. Sheathing Under Siding
Wind Wrap Air Infiltration Barrier
5/12 Pitch Shingle Roof with 10" Fixed Eaves
Architectural Shingles
Ridgevent Roof Ventilation System
Ice Shield
38x82 Steel 9-Panel Front Door with Deadbolt Lock
34x82 Fiberglass 6-Panel Rear Door with Deadbolt Lock
Vinyl Insulated Windows With Grids and Low-E Glass
12" Raised Panel Shutters on Front Door Side

CONSTRUCTION

2x10 Transverse Floor System on 16" Centers**
2x6 Exterior Walls on 16" Centers**
2x4 Interior Walls
40# Roof Load
90 Mile Exposure C Wind Load Design
¾" OSB T&G Floor Decking

**NOTE: Spacing for Framing Members may vary due to Design Requirements

KITCHEN

30" Gas Range
Power Range Hood with Light
18 Cubic Foot, No-Frost Refrigerator
Stainless Steel Sink - 33x19x7
Huntington Brass Brushed Nickel Single Lever Faucets

BATHS

60" One-Piece Fiberglass Tub/Showers
Fiberglass Glamour Tub in Glamour Baths
One-Piece Fiberglass Shower with Glass Door in Glamour Baths
Tub Overflows
1.6 Gallon Per Flush Elongated Toilets
China Stool, Tank and Lid
China Sinks with Pop-Up Drains
Huntington Brass Brushed Nickel Faucets
Anti-Scald Valves on Showers
Lighted Vent Fan in Each Bath



CABINETRY

Classic Craft Cabinetry (KCMA Approved)
Hardwood Flat Panel Cabinet Doors
Upgrade Cabinet Hardware
Concealed Cabinet Hinges
Crown Moulding on Overhead Cabinets
30" Staggered Height Overhead Cabinets on Select Models
Lined Overhead Cabinets
Adjustable Shelves in Overhead Cabinets
Deluxe Roller Guide Drawer System
Adjustable Center Shelf in Base Cabinets
Drawer Over Door Base Cabinets
Extended Sink Cabinet on Select Models
High-Pressure Laminate Countertops with Laminate Edging
4" Laminate Backsplash
Base Shelf in Vanities
33" High Vanities

Included Features

UTILITIES

Washer and Dryer Area
Plumb and Wire for Washer
Wire and Vent for Dryer
200 AMP Electrical Service
Copper Wiring Throughout
40 Gallon Electric Water Heater with Pan
Programmable Thermostat
90 Plus High Efficiency Gas Furnace
Woodgrain Furnace Door
Perimeter Heat System
Air Return System in Ceiling
Fiberglass Heat Ducts
Main Water Line Shut-Off Valve
Water Shut-Off Valves Where Accessible
One Exterior Water Faucet

FLOORING

Choice of various Styles of SHAW Textured Carpet with R2X Soil and Stain

Resistance:

- Standard New Day Carpet with Choice of 6 colors
- All Standard Carpet is 25 oz Nylon
- Upgrade Styles Available with over 20 Color Selections

Rebond Carpet Pad with Tackstrip Carpet Installation

No-Wax Vinyl Floor Coverings by Congoleum, including Foyer

BEDROOMS

Ceiling Lights
Egress Window Each Bedroom
Wire Shelving in Wardrobes
30" Interior Passage Doors
Switched Light in All Walk-In Closets



INNOVATIONS FOR LIVING™

INSULATION
R-19 Fiberglass Insulation in Walls
R-31 Avg. Blown Insulation in Ceiling



HUNTINGTON
BRASS



These specifications are accurate as of September 2012.



**10-Year Limited Structural
Warranty**